

MITEL

## SX-200 | CX Controller



### Advanced, Affordable Communication System for Small Business

The Mitel® SX-200 Integrated Communications Platform (ICP) delivers “large company” communication features and applications in a small business package. This all in one solution includes an embedded powered and managed 16 port layer 2 switch, Internet gateway and firewall. It also provides an extensive PBX / Key system feature set, and “best in class” phones and applications. Applications like Standard Unified Messaging, Teleworking, Feature Transparency over IP Networking, Automatic Call Distribution (ACD) plus many more features, enable small businesses to improve their external image by enhancing their customer service, employee productivity and reducing capital expenditures and operating costs.

#### Physical Dimensions

##### SX-200 CX Controller

Height:	3.5 in (8.9 cm) (2 U)
Width:	17.75 in (45.1 cm) (19" rack-mountable)
Depth:	16.5 in (39.4 cm)
Weight:	19.8 lb (8.98 kg)

#### Electrical Requirements

<b>Power Supply:</b>	Input / Disconnect: IEC 320 C14 Class 1 AC Receptacle
<b>Operation:</b>	100 – 120 / 200 – 240 Vac auto selectable
<b>Maximum power input:</b>	250 W
<b>AC Source:</b>	90 – 132 Vac: 47 – 63Hz in North America

#### Environmental Requirements

The SX-200 CX Controller should be located in an area that is dry, clean, well ventilated, well lit and readily accessible.

#### Operational Environment

##### Condition Specifications

Temperature:	39° – 120°F (4° – 49°C)
Humidity:	34 – 95% relative humidity, non condensing
Maximum Heat:	Dissipation – fully loaded: 170 BTUs per hour

Conversion factors: one watt is equal to 3.412 BTUs per hour, one ton of refrigeration is equal to 12,000 BTUs per hour or 3.516 kilowatts, and 3/4 kilowatt per hour is equal to one ton of refrigeration.



it's about **YOU**

### CX Controller Front Panel

- RS-232 port (DB-9 connector) maintenance terminal function (printer function available via LAN port)
- 10 / 100Base – TX WAN port
- 10 / 100 / 1000Base – TX LAN port
- Sixteen 10 / 100Base – TX 802.3af LAN ports
- Two USB 1.1 / 2.0 ports for future use
- Expansion sites for Dual DSP and / or T1 / E1 Combo modules
- CompactFlash card Reader
- Status LEDs

### CX Controller Rear Panel

- Power connector
- Protective ground-to-ground the chassis
- Music-on-hold connector
- Paging connector
- Analog Mainboard Relay (RJ11 Connectors)

### CX Controller

- Six LS/CLASS circuits, upgradeable to 12
- Four ONS/CLASS circuits, upgradeable to eight
- One dedicated Music-on-Hold port with support for additional music sources via ons ports
- One dedicated paging port with support for one additional paging device
- Two power-fail transfer circuits with support for two additional circuits
- One dedicated port for two door opener relays with expansion for two more
- Four ports of voice mail, upgradeable to 16
- Dual DSP
- DHCP server
- 32 Ethernet to TDM (E2T) channels
- 64 IP phones
- 748 mailboxes

### Option Modules

- Analog service module (provides four additional ONS and six LS / CLASS circuits)
- Dual DSP module (expands voice mail, conferences and compression)
- T1 single link combo module

### Phones Supported

- Mitel 5201 IP Phone
- Mitel 5207 IP Phone
- Mitel 5215 IP Phone
- Mitel 5220 IP Phone

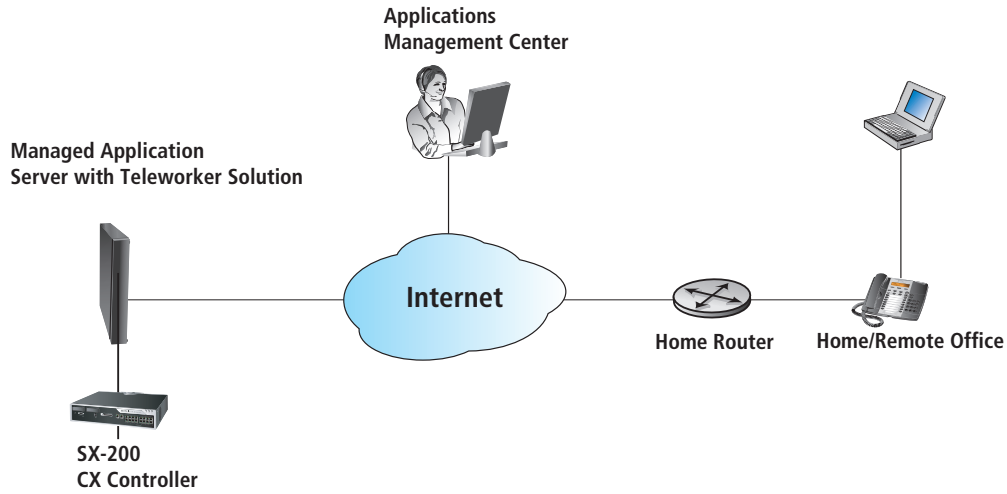
### Other Peripherals Supported

- Mitel 5303 Conference Phone
- Mitel 5310 IP Conference Unit
- Mitel 5412 Programmable Key Module (PKM)
- Mitel 5448 Programmable Key Module (PKM)

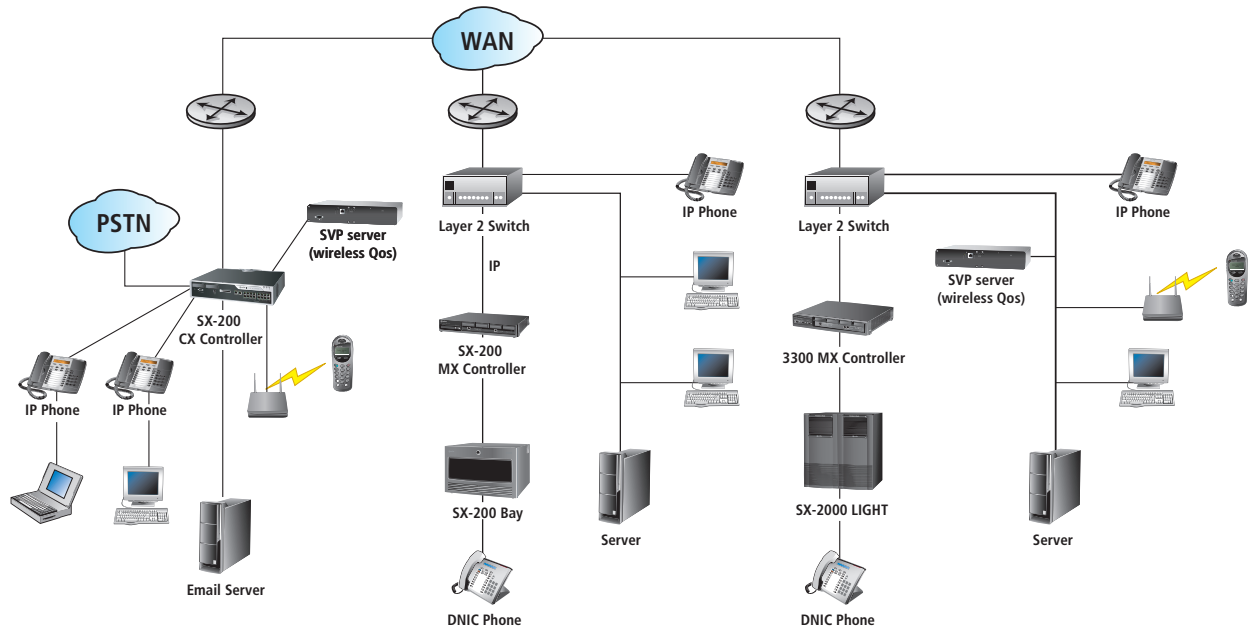
### Applications Supported

- SMTP (email) client
- Notification of E-911 calls, three different addresses at once
- Standard Unified Messaging
- Integrated voice mail option, forward voice mail to email
- Notification of alarms, three different addresses at once
- On-demand maintenance logs
- IP networking (16 IP channels and up to 100 systems per network)
- 802.11 wireless application
- Automatic Call Distribution (ACD)
- Auto / multi-level auto attendant
- Tenanting
- MyAdministrator
- Mitel Managed Application Server
- Mitel Teleworker Solution
- Mitel Office Server Suite
- Mitel Managed VPN
- Mitel 6100 Contact Center Solutions

### SX-200 CX Controller with Teleworker Solution



### Mixed Mitel IP Networking Example



MITEL  
it's about **YOU**

Companies don't make decisions, people do. That is why Mitel is leading the way toward a new and more personalized approach to communications for enterprise and small business. Our innovative solutions, applications and desktop appliances enable you to access, process and control your communications and information naturally, simply and efficiently.

Our solutions allow you to collaborate over distance and time and to interact with your customers, colleagues and partners as never before. By combining the power of voice, data and video over converged high speed networks, Mitel provides you with flexible and personalized tools that let you leverage the latest advances for personal and organizational advantage.

<b>North America</b> Tel: (613) 592 2122 Fax: 1 800 648 3579	<b>Latin America</b> Tel: (613) 592 2122 Fax: 1 800 648 3579	<b>UK</b> Tel: +44 (0)1291 430000 Fax: +44 (0)1291 430400	<b>France</b> Tel: +33 (0)1 61 37 00 90 Fax: +33 (0)1 61 37 00 99
<b>Benelux</b> Tel: +31 (0)30 85 00 030 Fax: +31 (0)30 85 00 031	<b>Italy</b> Tel: +39 02 2130231 Fax: +39 02 21302333	<b>Germany, Switzerland, Austria</b> Tel: +49 (0)211 5206480 Fax: +49 (0)211 52064899	<b>Portugal and Spain</b> Tel: +34 91 350 66 33 Fax: +34 91 350 70 14
<b>Middle East</b> Tel: +971 4 3916721 Fax: +971 4 3915288	<b>South Africa</b> Tel: +27 82 559 8688 Fax: +27 11 784 6916	<b>Asia-Pacific</b> Tel: +852 2508 9780 Fax: +852 2508 9232	

[www.mitel.com](http://www.mitel.com)



THIS DOCUMENT IS PROVIDED TO YOU FOR INFORMATIONAL PURPOSES ONLY. The information furnished in this document, believed by Mitel to be accurate as of the date of its publication, is subject to change without notice. Mitel assumes no responsibility for any errors or omissions in this document and shall have no obligation to you as a result of having made this document available to you or based upon the information it contains.

M MITEL (design) is a registered trademark of Mitel Networks Corporation. All other products and services are the registered trademarks of their respective holders.

© Copyright 2004, Mitel Networks Corporation. All Rights Reserved.

GD 7935 PN 51008498RA-EN